

OVATION 56 EGG INCUBATORS – CLEANING / SERVICE GUIDE



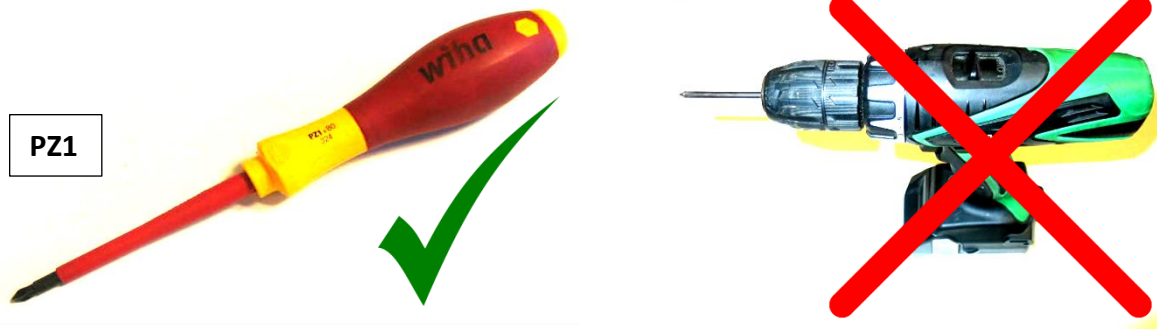
Danger
Electric shock risk

ISOLATE SUPPLY BEFORE REMOVING COVER.

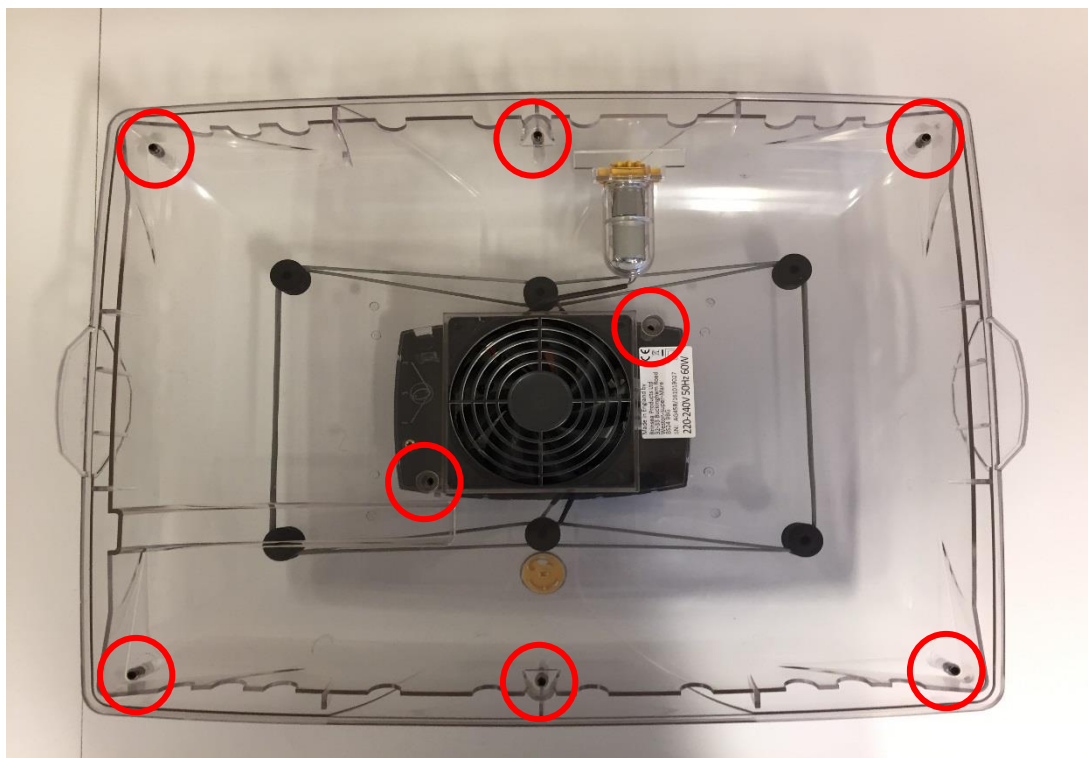
The heating wire, thermal fuse and associated terminals are supplied at high voltage. Disconnect the power cable from the incubator before removing any parts.

This cleaning operation must only be carried out by a suitably qualified and competent person. There is a risk of fire, personal injury or electric shock if not carried out correctly. Disconnect the appliance from the mains supply before removing any cover. Always replace the cover before applying power. Brinsea Products Ltd. shall not be liable for any loss or injury incurred as a result of incorrect servicing or fitment of replacement parts. If in any doubt contact your local Brinsea stockist or Brinsea Products Ltd. at the address at the end of this document.

1. Read and understand this guide in full before cleaning / servicing the appliance.
2. Disconnect the power cord from the incubator. Do not allow it to get wet.
3. Only use a well-fitting hand screwdriver with a Pozidriv PZ1 tip – power tools may cause damage to threads in plastic parts!



4. Place incubator top upside down and remove 8 screws to release the inner lid:



5. Clean the inner lid with a cloth made damp with correctly diluted incubator disinfectant solution. Once clean, wipe off the disinfectant with a cloth made damp with clean water.

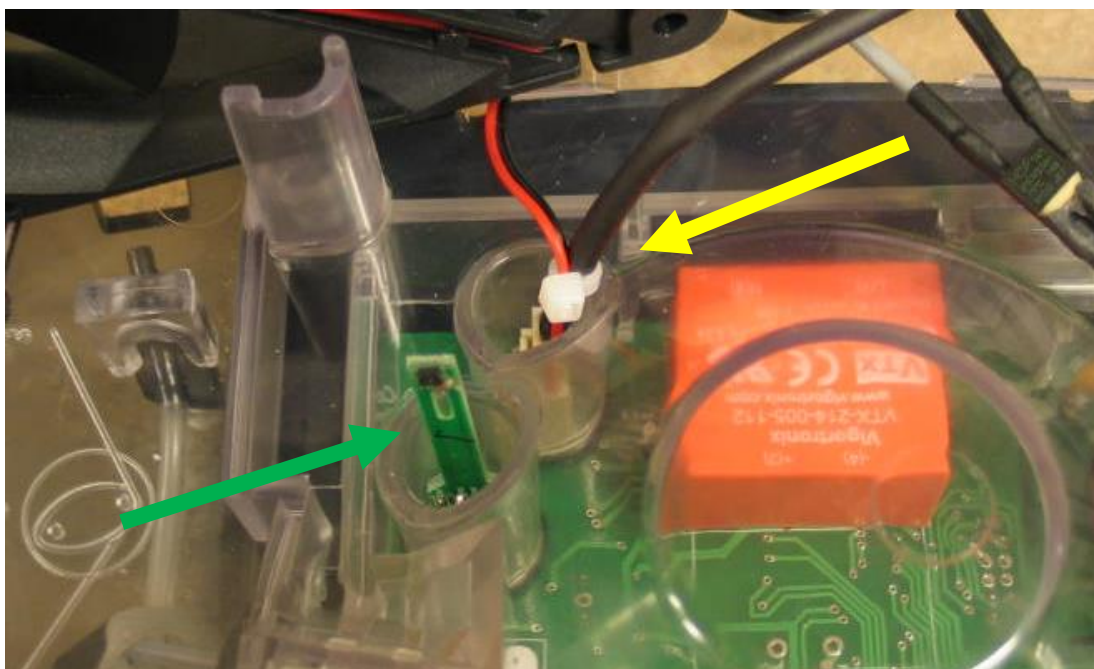


6. The fan and the egg turning motor may be lifted from their locations in the incubator lid.

Do not allow the wires or connectors (yellow arrow in picture) to be strained.

Only remove the fan or the egg turning motor if necessary. Take notice of how they are located to ensure correct replacement (also see sections 11-13). The connectors may be separated by pulling gently on both wires in a vertical direction.

Do not touch the temperature sensor (green arrow sensor detail may vary by model).



7. The fan may be cleaned using a soft brush and a vacuum cleaner.



8. The egg turning motor may be cleaned with a cloth made damp with correctly diluted incubator disinfectant solution. Once clean, wipe off the disinfectant with a cloth made damp with clean water. Do not allow the motor to become wet.



9. The heating element may be cleaned using a soft brush and a vacuum cleaner.

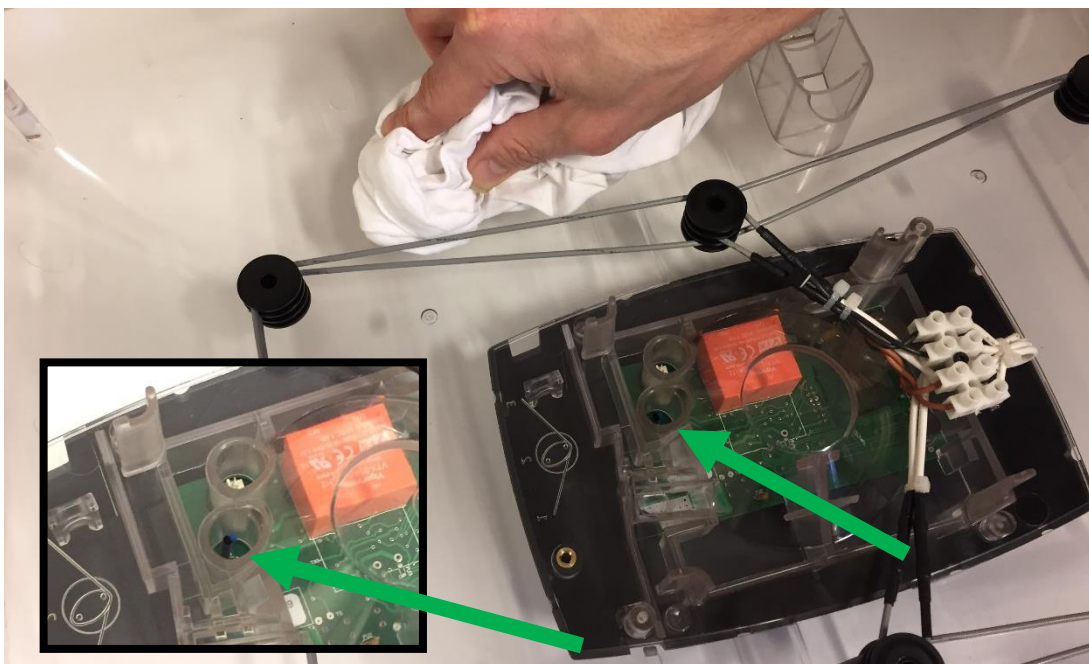
Use no liquids.

Do not disturb the thermal fuse (red arrow).



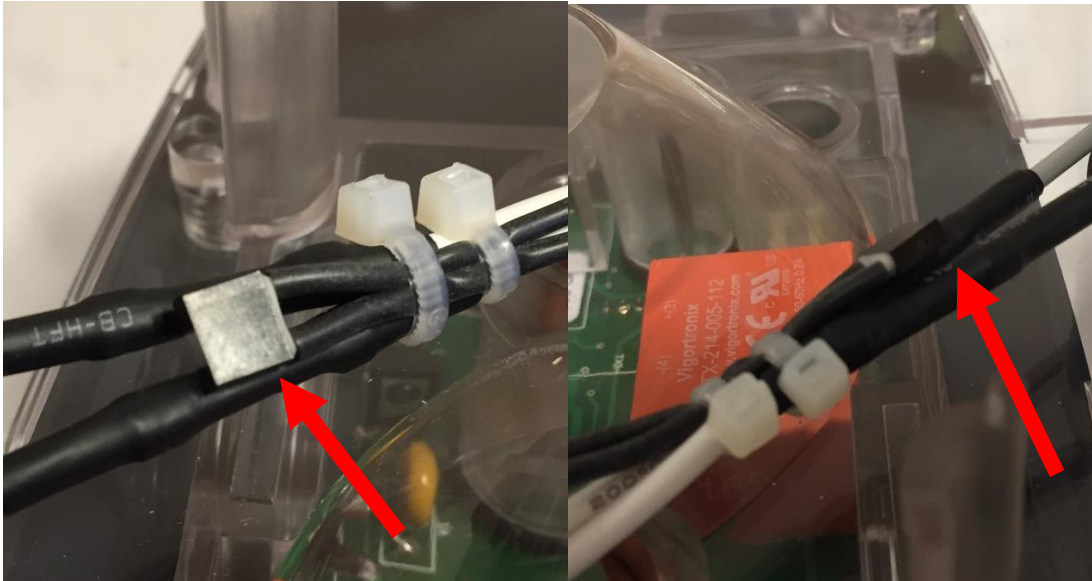
10. The inside surface of the incubator lid may be cleaned with a cloth made damp with correctly diluted incubator disinfectant solution. Once clean, wipe off the disinfectant with a cloth made damp with clean water.

**Do not touch the temperature sensor (green arrow, sensor detail may vary by model).
Fluids / moisture may destroy the sensor.**

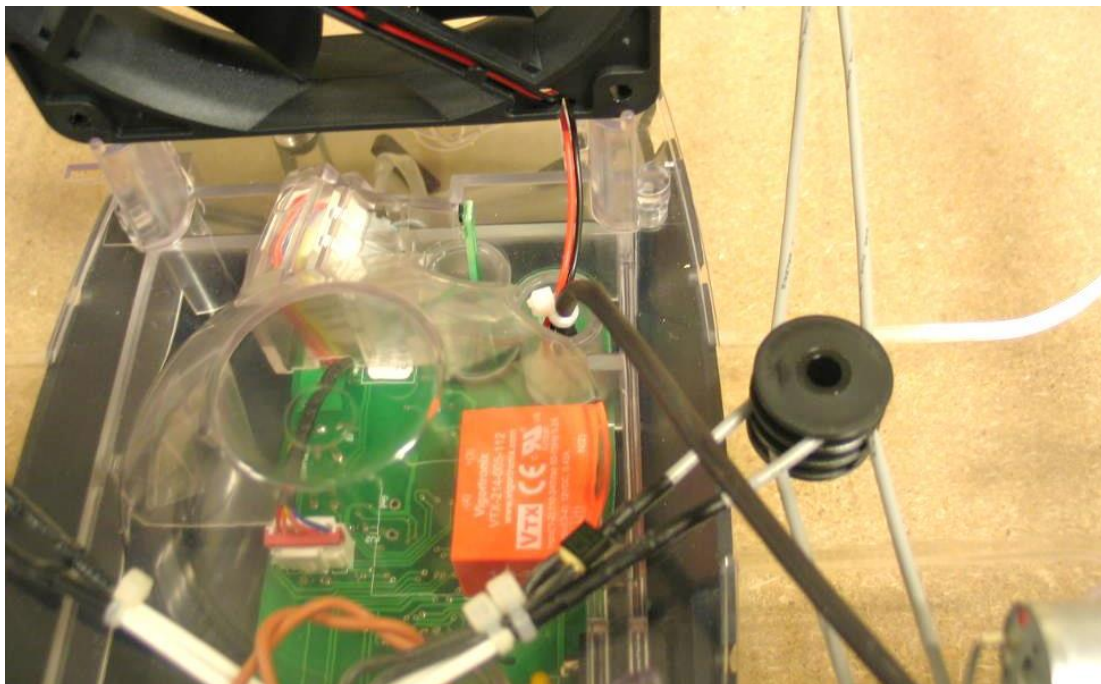


11. Once the cleaning service is complete ensure the thermal fuse is still located flat against the heater wires as shown.

The ongoing safety of the appliance relies on the correct location of the thermal fuse.



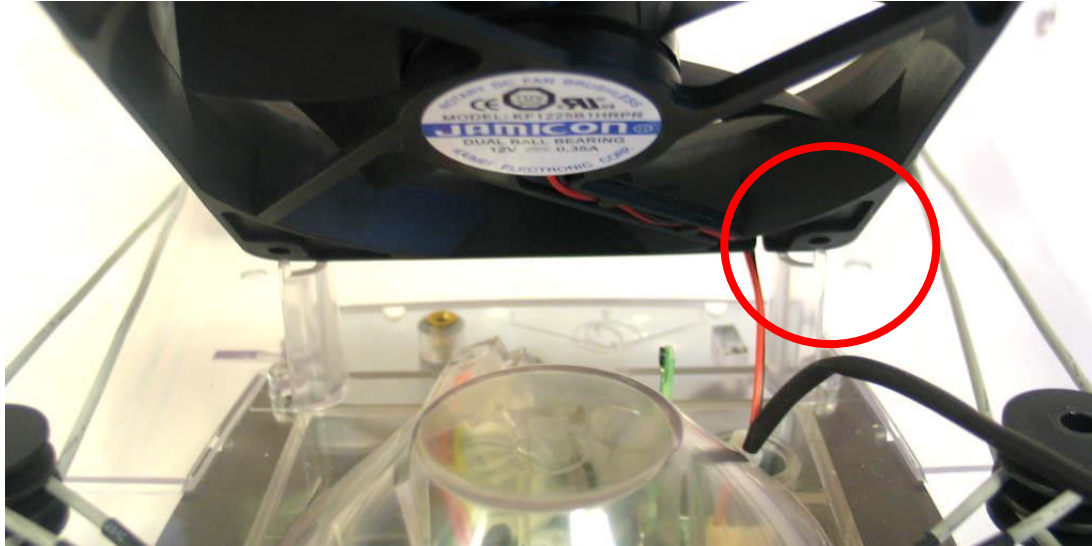
12. Ensure the fan and egg turning motor connectors are fitted in the correct locations and pushed fully home. Hold the fan in the position shown to enable the connectors to be pushed into place. Note the path of the egg turning motor wire. The connectors may be pushed fully into place with the aid of a small screwdriver.



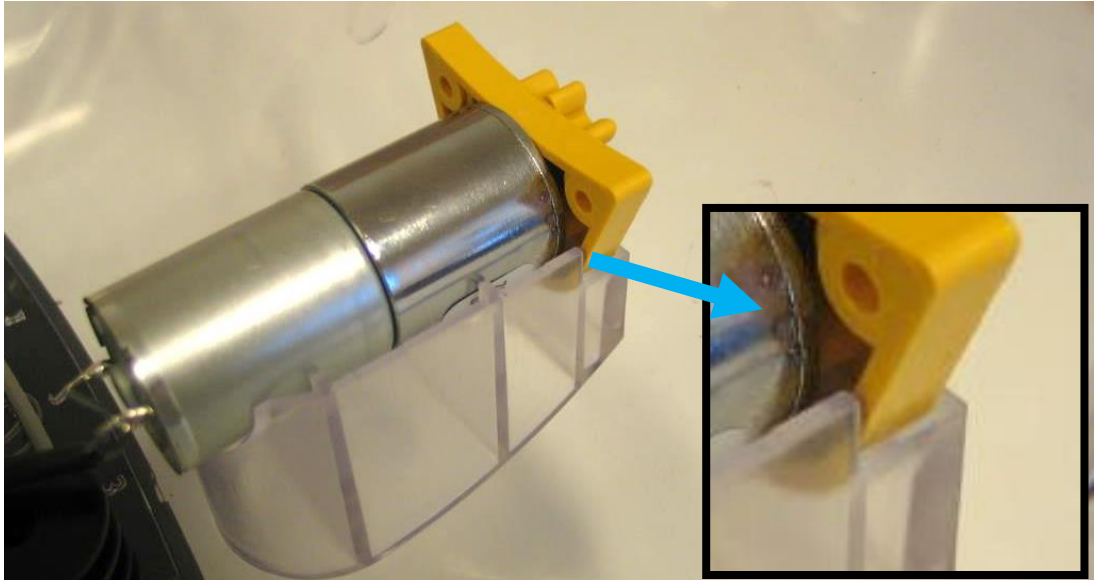
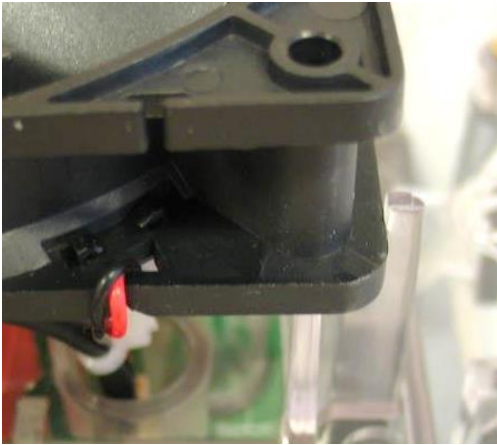
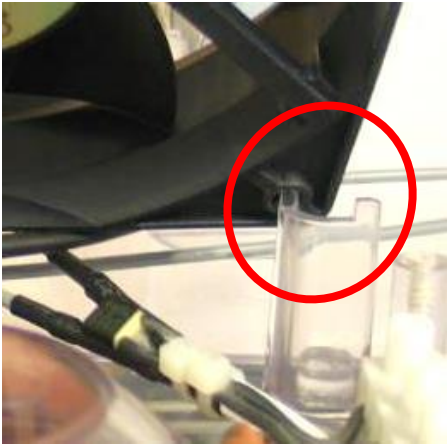
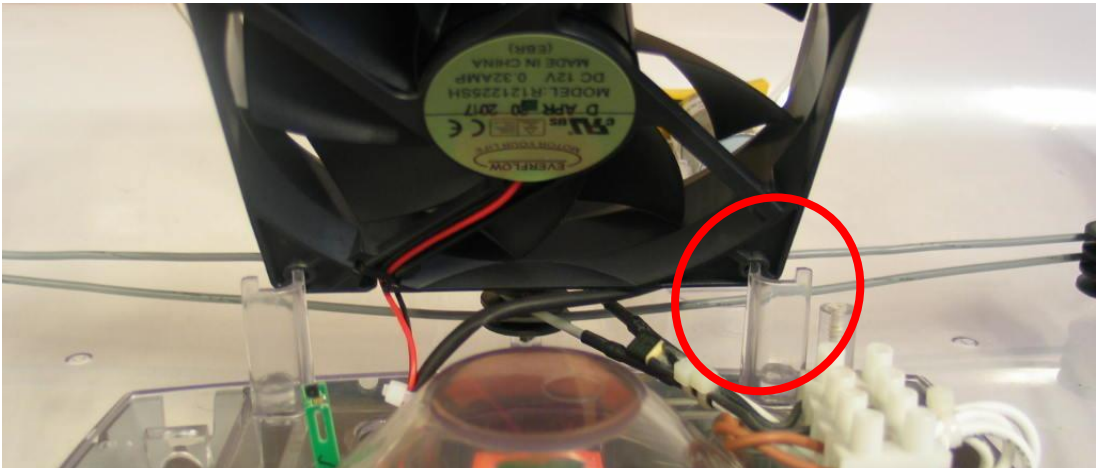
13. Ensure the fan is evenly located on its 4 posts and the egg turning motor is located in the socket in the incubator top moulding. Check the fan and motor connectors are still pushed fully into place once the fan and motor have been fitted!

Two versions of fan may have been fitted, one with seven blades or one with nine blades. Ensure the correct wire locations are observed for the two types:

Seven blade fan:



Nine blade fan:



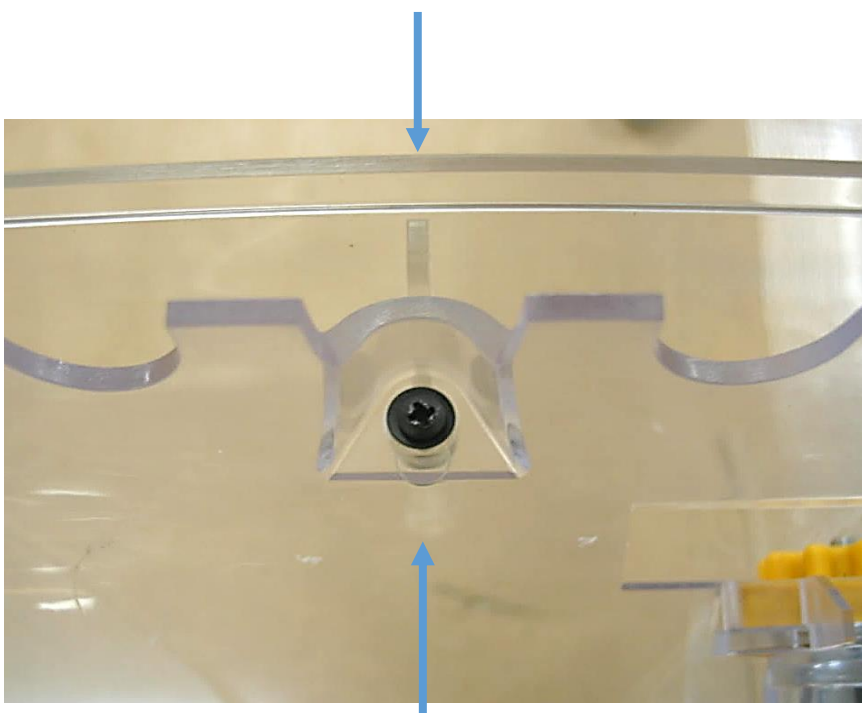
14. Refit the inner top and fasten with the 8 screws.

Do not over tighten. Ensure the screwdriver is a good fit. Do not use power tools.

Ensure the yellow cap of the egg turning motor is held in the mouldings as shown below:



Gently force the sides of the outer top part inwards as each of the two centre screws on the long sides are tightened (as blue arrows below). Later models have small washers fitted under the middle screws as shown below. This ensures a close fit of the lid on the incubator base which is important for humidity control.



15. The incubator base, water pan covers, egg carriers and carrier link parts may all be washed in warm soapy water before wiping with incubator disinfectant solution and then rinsing.

Ensure all parts are completely dry before storage, failure to do so may result in damage that will not be covered in the manufacturer's guarantee.

If in any doubt contact your local Brinsea stockist or Brinsea Products Ltd.

Brinsea Products Ltd, 32-33 Buckingham Road, Weston Industrial Estate,
Weston-super-Mare, N. Somerset, BS24 9BG
Tel: +44 (0) 345 226 0120 Fax: +44 (0) 1934 708177
e-mail: sales@brinsea.co.uk website: www.brinsea.co.uk